

Suction hopper loader on compressed air base for bulk materials

- ➔ compact type of construction
- ➔ maintenance-free*
- ➔ wear-resistant
- ➔ low noise

Compressed air based suction hopper loader of stainless steel, filter element placed in ejector top part, integrated ejector, compressed air consumption max. 500 l/min. discharge valve controlled by magnet switch, conveying start at closed discharge valve, conveying pipe connection Ø40mm, conical outlet, approx. sizes 1, 2, 5 Liters.

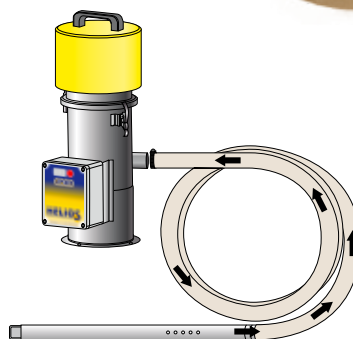
* except filters



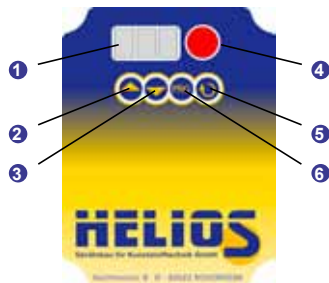
- ① compressed air connection
- ② clips for hinged cover
- ③ operating touch pad
- ④ conveying line
- ⑤ main switch and plug for power supply



Flowable bulk materials,
regrinds, resins and powders

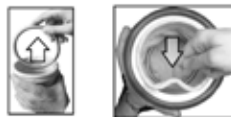
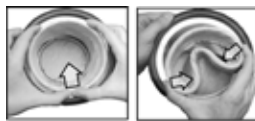


HCA operating pad

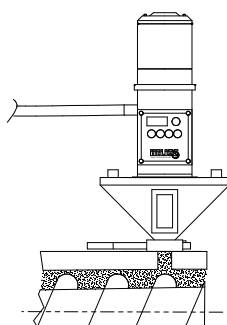


control

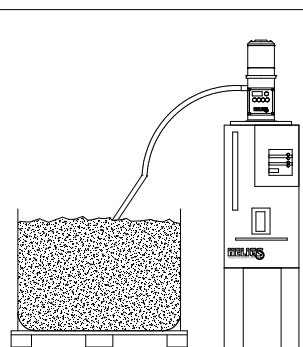
- 1 triply-digit display
- 2 arrow key, upwards
- 3 arrow key, downwards
- 4 light signal
- 5 rewind key
- 6 program key



Filter change easily



Conveying of resin/powder onto an Extruder / injection moulding machine



Dryer feeding



HCA placed on a storage hopper



HCA placed on a stand-alone dryer unit

HCA-1 / HCA-2 / HCA-5

Basic equipment

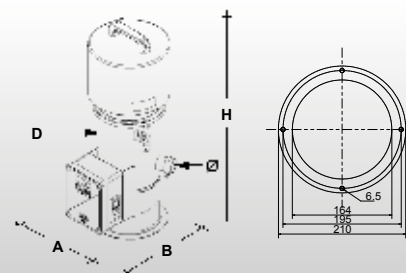
- material touching parts of stainless steel
- automatic filter dedusting
- removable Polyester filter
- hinged top part
- integrated conveying control
- suction lance with 3m of PVC hose

HCA-1 / HCA-2 / HCA-5

Optional equipments

- 2 components discharging valve
- storage hopper

type	HCA-1	HCA-2	HCA-5
size D Ø (mm)	170	170	223
size A (mm)	252	252	348
size B (mm)	290	290	365
size H (mm)	520	622	640
weight (kg)	9	9,5	11
electrical power supply	230 V 50 Hz		
pneumatic connection (dynamic / maximum)	DN10 / 6 bar / 500 l min.		
conveying volume (Liter)	1	2	5
conveying capacity (kg/h)*	up to 150 kg/h	up to 200 kg/h	up to 300 kg/h
conveying line Ø	DN40		



* depending on the bulk material type, conveying distance and compressed air supply